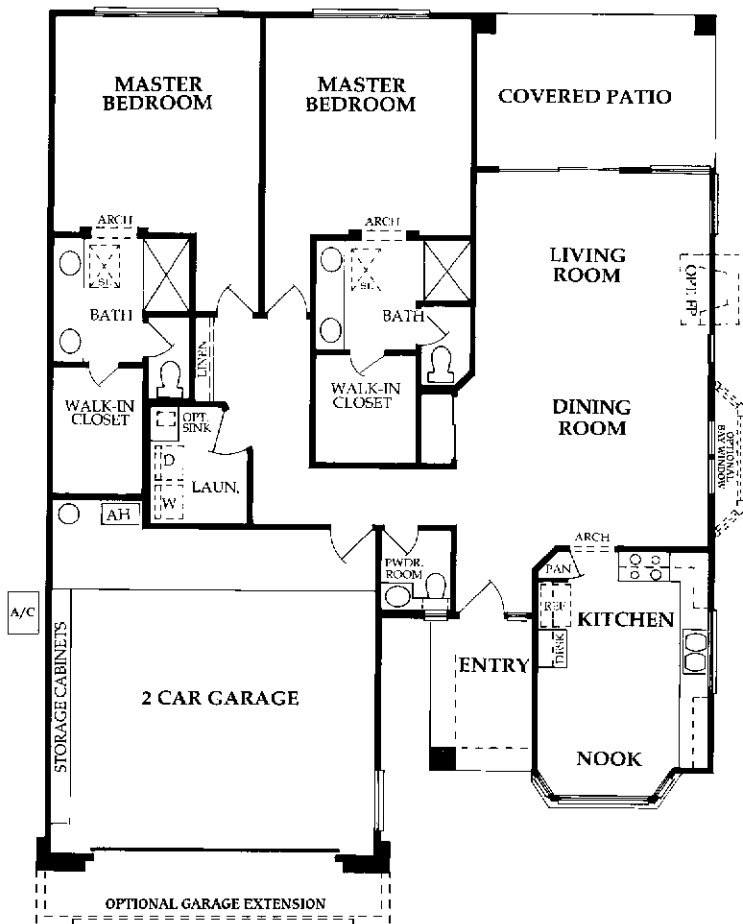




Exterior Design — A

The Cortez - Plan 1592

2 Master Suites, 2-1/2 Baths, 1590 Livable Sq. Ft.



Exterior Design — C

Special Features

- Built-In Kitchen Desk
- Bay Window in Breakfast Nook
- Hall Cabinet
- Custom Closet in Master Bedroom
- Storage Cabinets in Garage

Livable Interior.....1590 Sq. Ft.
 Garage And Storage.....477 Sq. Ft.
 Patio And Porch.....220 Sq. Ft.

Total Under Roof.....2287 Sq. Ft.